

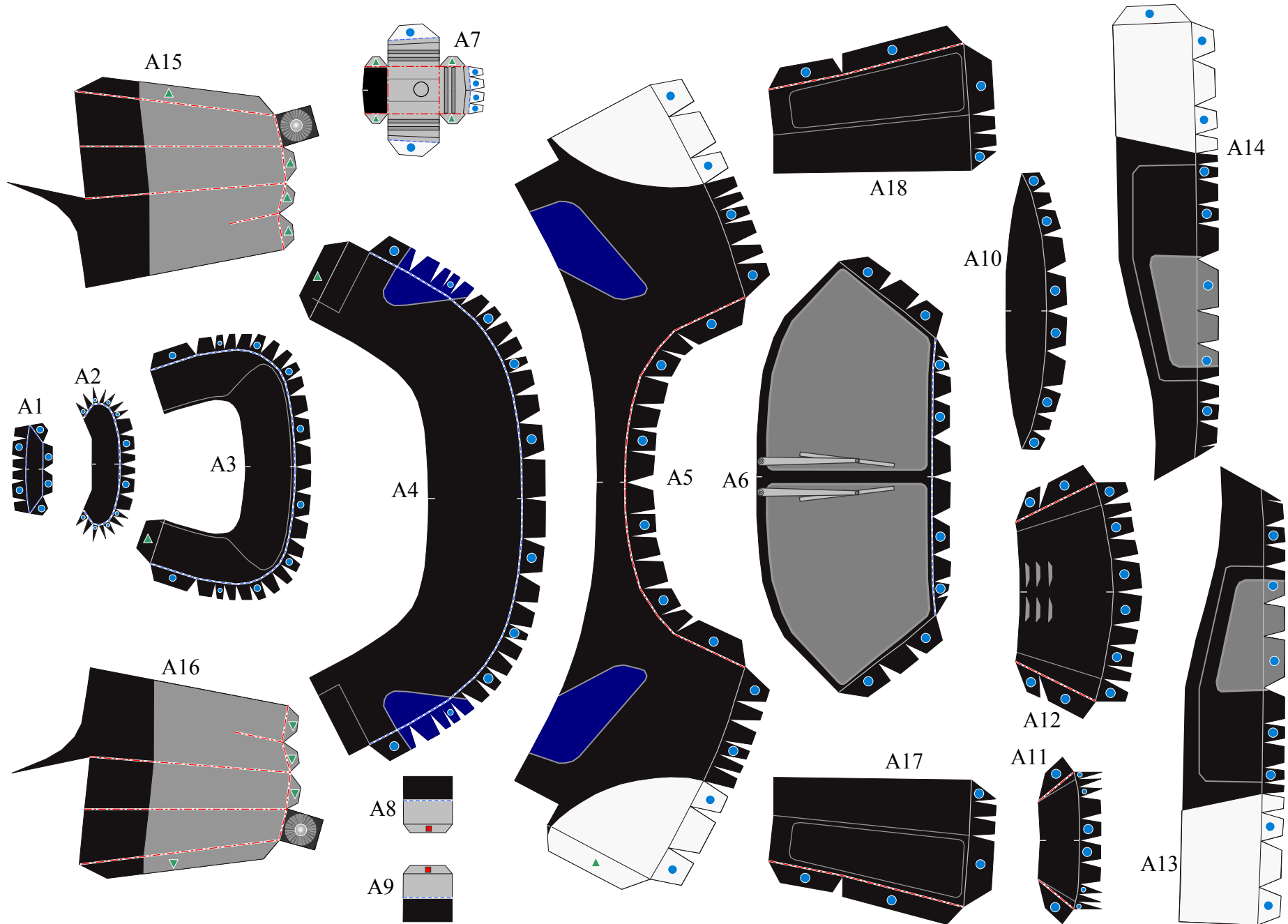


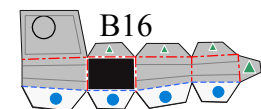
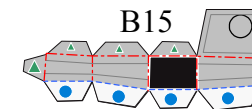
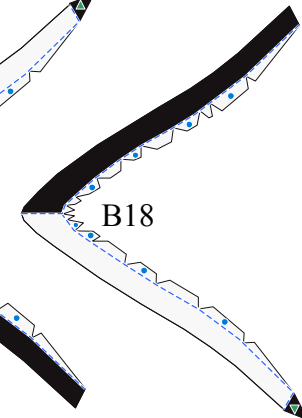
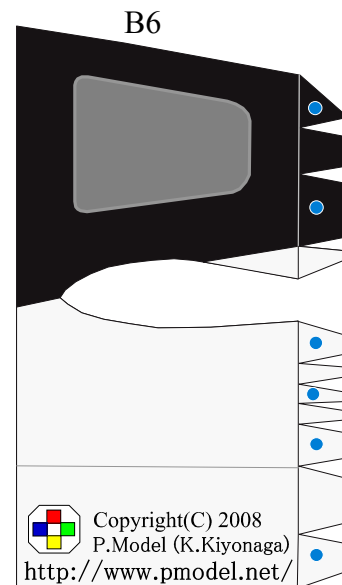
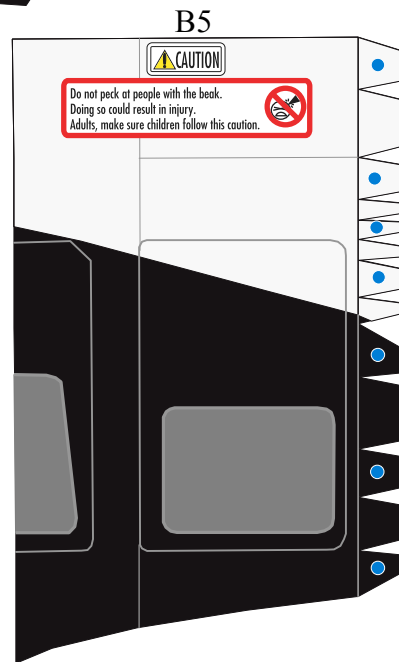
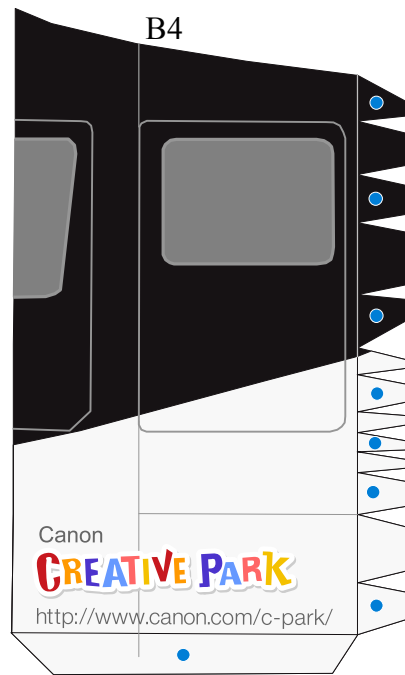
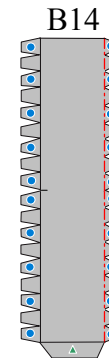
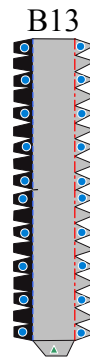
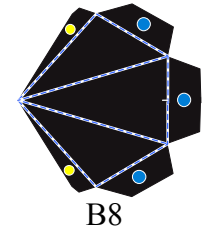
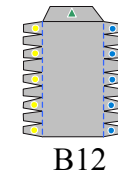
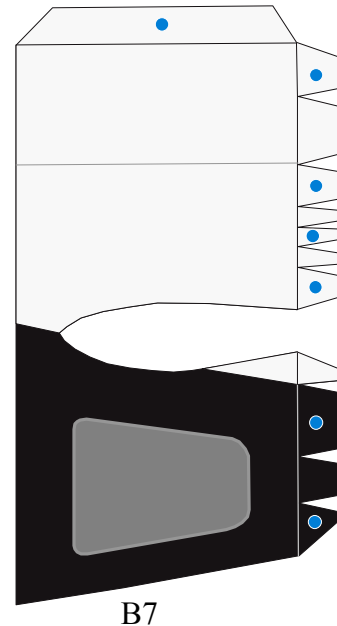
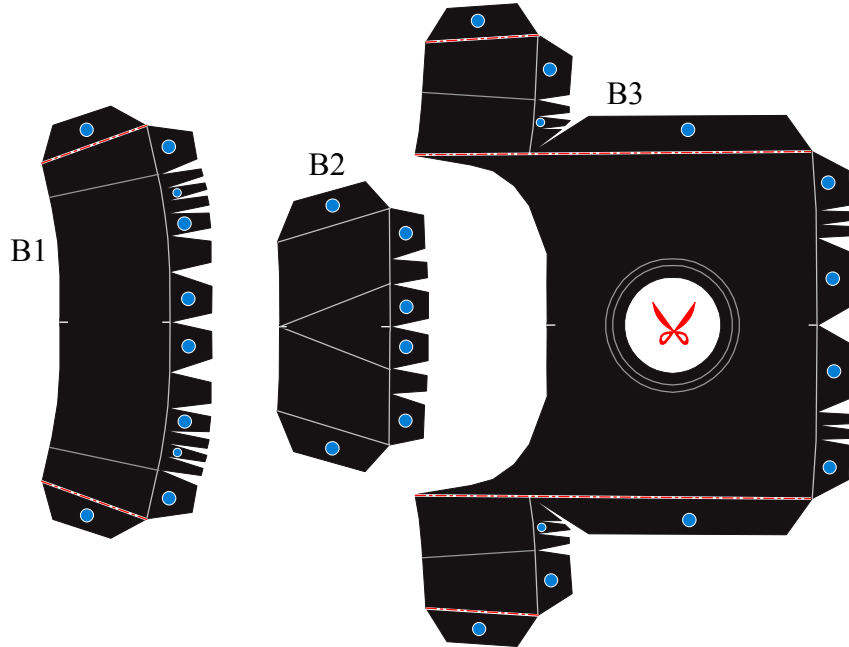
Helicopter

| | |
|--------------------------------|-------------|
| Completed Model (Total length) | About 400mm |
| (Total width) | About 130mm |
| Pattern | 8 pages |
| Assembly Instructions | 8 pages |

A helicopter is a type of aircraft that has rotary wings. The engine causes the long slender wings, called rotors, at the top of the helicopter to rotate, providing lift and allowing the helicopter to fly. Compared to aircraft with fixed wings, helicopters are slow and get poor mileage so they don't fly long continuous distances. But they can take off and land in narrow places because they have the unique ability to move up and down vertically, as well as fly in reverse, sideways and hover. For these reasons, helicopters have been put to use in many ways, such as for transporting cargo, conducting rescue operations, and for industrial aviation. This paper-craft helicopter is a standard single-rotor type.

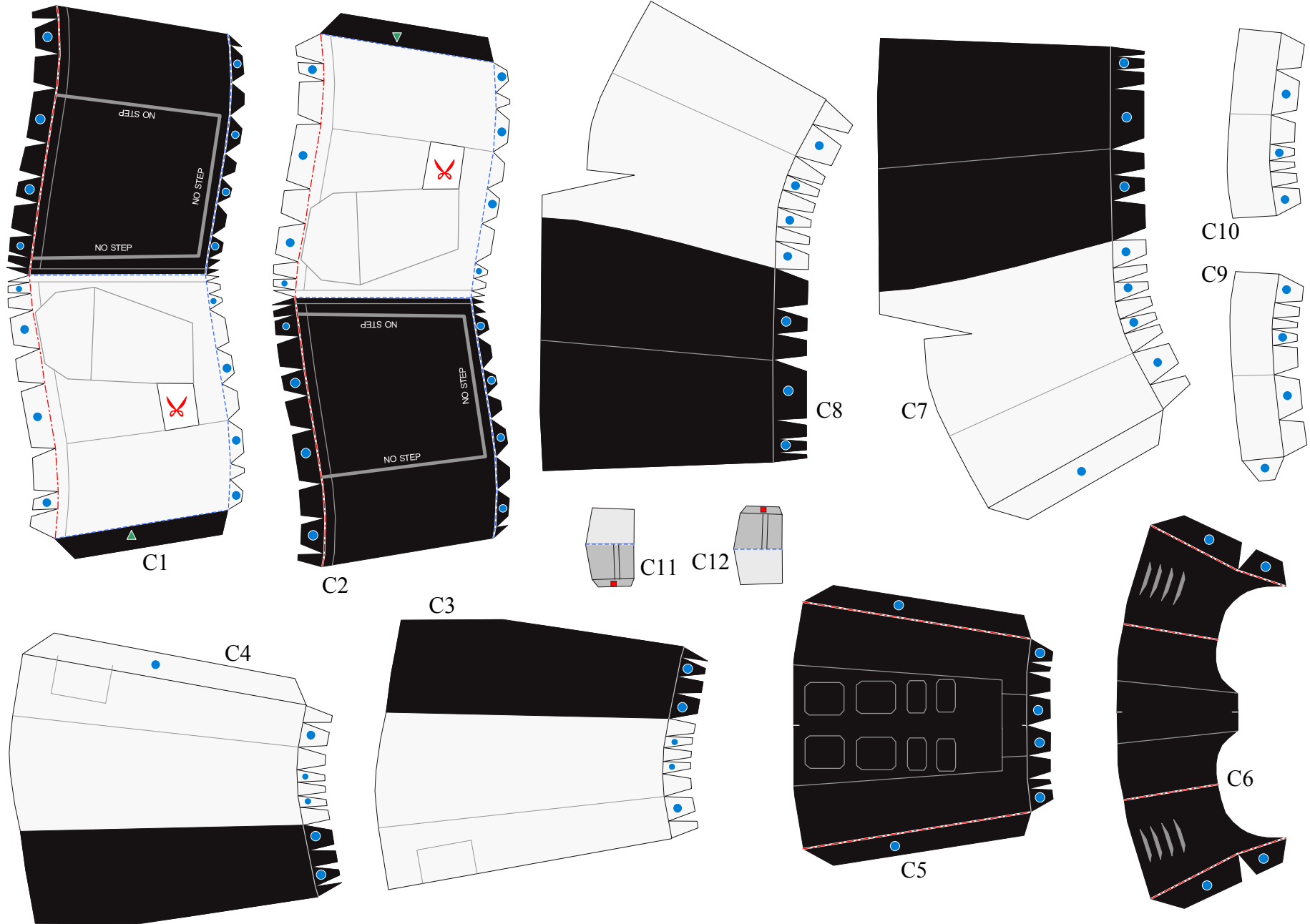
*Build the model by carefully reading the Assembly Instructions, in the parts sheet page order.

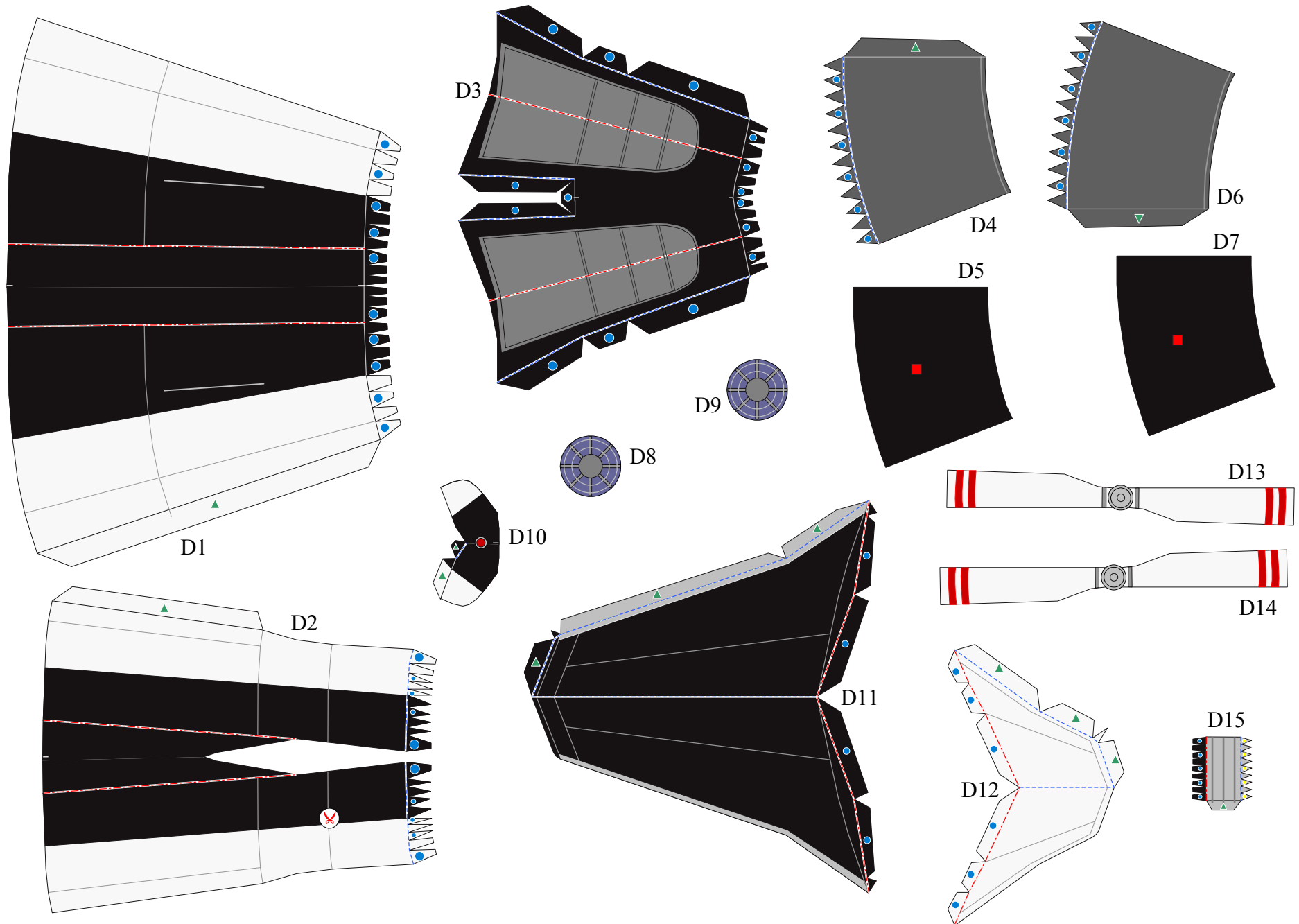


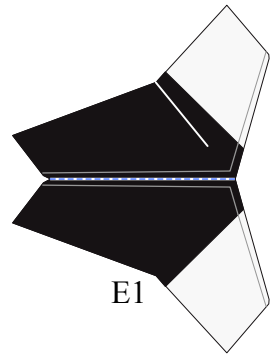


Canon
CREATIVE PARK
<http://www.canon.com/c-park/>

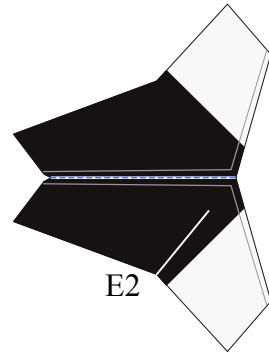
Copyright(C) 2008
P.Model (K.Kiyonaga)
<http://www.pmodel.net/>



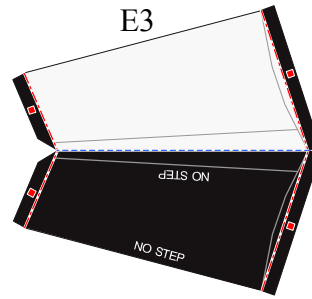




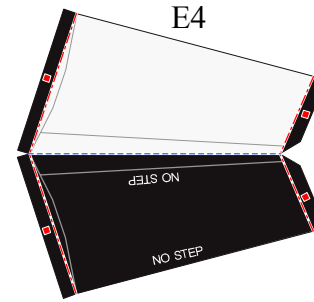
E1



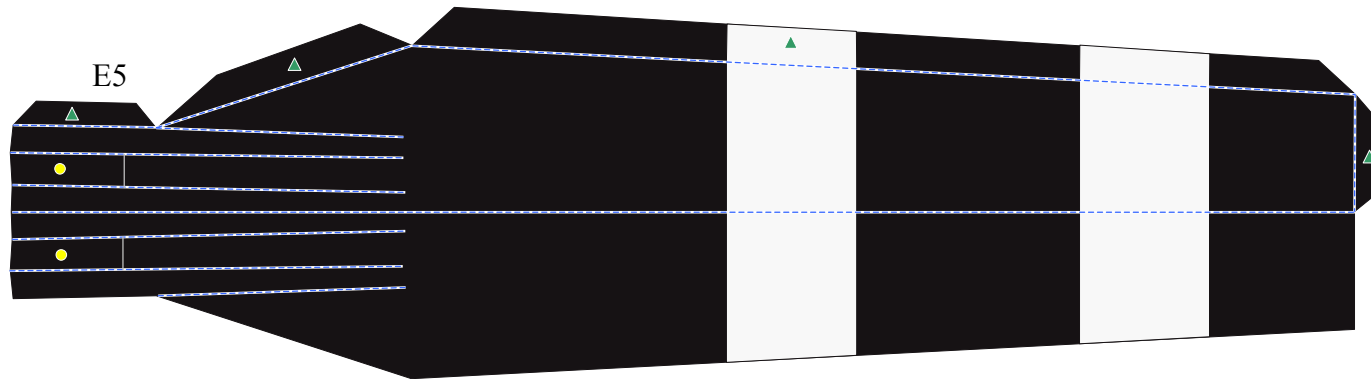
E2



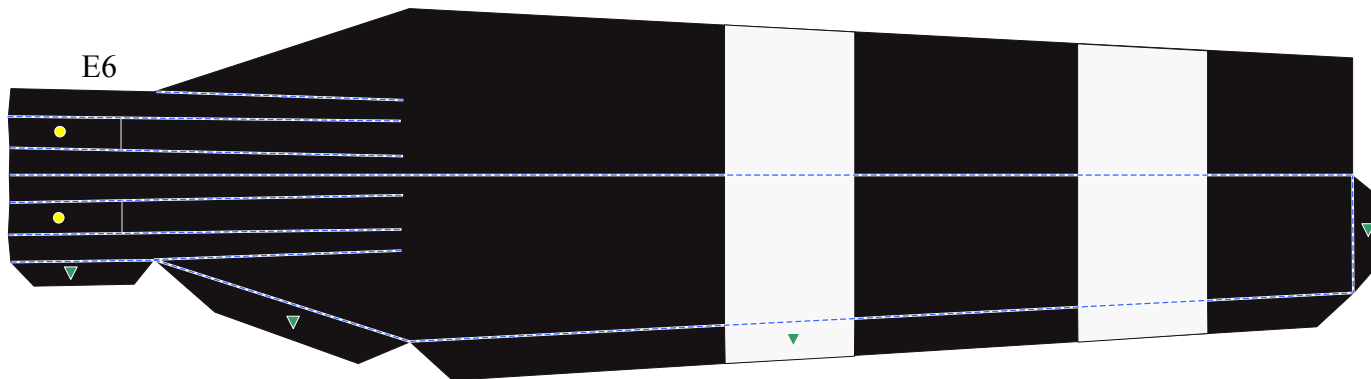
E3



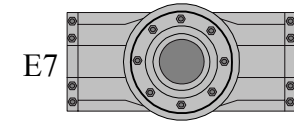
E4



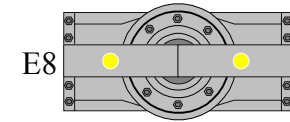
E5



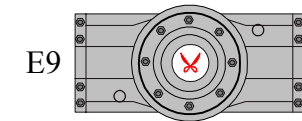
E6



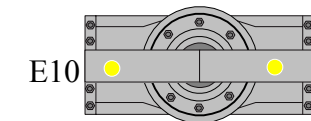
E7



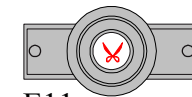
E8



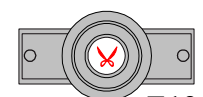
E9



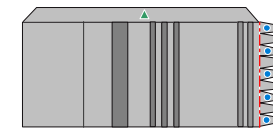
E10



E11



E12



E13



E14



E15

